



**evologics**  
evolving biologics

## PRODUCT CATALOG 2026

Evologics is a biologics company focused on providing access to human tissue allografts and related surgical products.

Our culture puts people first, from patients and physicians to our team and partners

Our mission is to support clinicians and healthcare facilities with high-quality products, responsive service, and a commitment to safety, stewardship, and regulatory compliance.

# the evologics difference

## we care more

Since 2009, Evologics has been dedicated to delivering the highest-quality biologic products nationwide—ensuring patients receive exceptional care while supporting the financial goals of healthcare providers. Our commitment runs deeper: we go the extra mile, work harder, and care more. That's what sets Evologics apart.



EvoPatch™ Amnion

### COMPREHENSIVE BIOLOGIC SOLUTIONS

Evologics provides a diverse portfolio of AATB-accredited allografts, including amnion, soft tissue, bone, DBM, and more. Our solutions support a wide range of surgical specialties, such as spine, orthopedics, sports medicine, colorectal, OB-GYN, podiatry, and wound care—empowering clinicians to focus on what matters most: patient outcomes.

DBM Putty



### STATE-OF-THE-ART MANUFACTURING

Evologics is a managing partner of J4 Biologics, our EvoPatch manufacturer. Both Evologics and J4 Biologics are registered with the FDA and operate under the Association for Advancing Tissue and Biologics (AATB) standards. Our allografts are produced in controlled clean-room environments using validated sterilization technologies and in accordance with FDA regulations for human cells, tissues, and cellular and tissue-based products (21 CFR Part 1271), helping ensure consistent safety and quality for surgeons and their patients.



# Table of Contents

---

## **evopatch™**

Amnion Membrane Tissue

## **evoderm™**

Acellular Dermal Matrix

## **evoflakes™**

Placental Tissue Matrix

## **demineralized bone matrix (DBM)**

EVOGRAFT™ DBM Putty

EVOGRAFT™ DBM Crush

EVOGRAFT™ DBM Strips

EVOGRAFT™ DBM Cubes

EVOGRAFT™ DBM Cortical Fibers

EVOGRAFT™ DBM Fiber Boats

EVOGRAFT™ DBM OsteoBlend

## **sports medicine**

EVOGRAFT™ Tendons

## **facsia lata/pericardium**

Fascia Lata

Pericardium

## **allografts**

Structural Allografts

Tricortical Wedges

Cervical Spacers

Foot Wedges

Cancellous Cubes

Cancellous Crushed

## **synthetics**

TCP in Collagen Matrix

## **bma/prp**

BMAC Kit

PRP Kit

# evopatch™

double-layer amnion graft

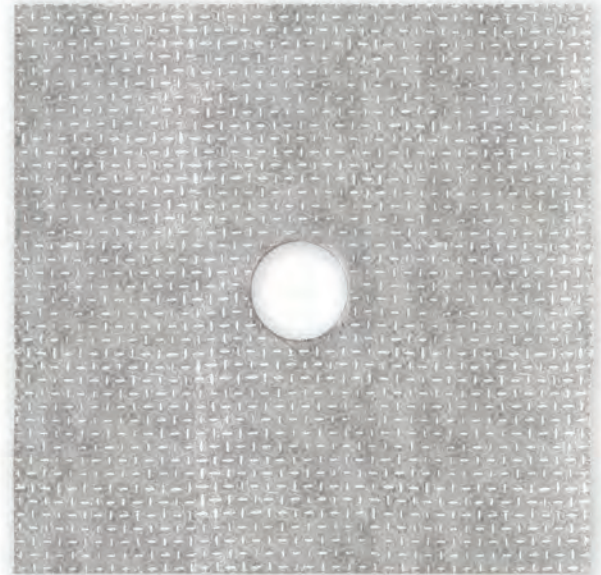
evopatch™  
6x6cm end to end

## Product Overview

EvoPatch™ is a double-layer, chorion-free human amnion allograft intended for homologous use as a protective covering in surgical settings.

## Product Features

- Double-layer amnion construction (two layers of amnion).
- Chorion-free (amnion-only).
- Omni-directional (no up/down orientation required for placement).
- Offered in multiple sizes to support surgical workflows.
- 6×6 cm configuration available, including an “end-to-end” option.



evopatch™  
4x6cm graft

## Designed for Surgical Workflows

EvoPatch™ is provided in configurations intended to support placement in **robotic, laparoscopic, and open surgical procedures**, consistent with the Instructions for Use and clinician judgment.

EvoPatch is a human cells, tissues or cellular or tissue-based product (HCT/P) regulated solely under Section 361 of the Public Health Service Act and 21 CFR Part 1271. This product is minimally manipulated and intended for homologous use, and does not require pre-market approval by the FDA. EvoPatch has not been cleared or approved by the FDA.

# evopatch™

## double-layer amnion graft

EvoPatch™ is supplied in a range of sizes and may be used as a protective covering in a variety of surgical procedures. The examples below are procedure categories where clinicians may consider use, consistent with the Instructions for Use and surgeon judgment. This list is informational and does not imply clinical outcomes.

### GENERAL SURGERY

- Breast procedures
- Colon and rectal procedures
- Cholecystectomy
- Hernia repair
- Adhesiolysis (lysis of adhesions)

### COLORECTAL SURGERY

- Lower anterior resection (LAR)
- Rectal stump procedures
- Colectomy procedures
- Small and large bowel procedures
- Incision site closure (including port or hand-assist sites)

### GYNECOLOGIC

- Hysterectomy
- Oophorectomy
- Myomectomy

### SURGICAL ONCOLOGY

- Breast
- Colon/Rectal
- Pancreatic
- Esophageal

### UROLOGY

- Robotic or laparoscopic prostatectomy
- Urethral reconstruction/stricture procedures

### CARDIOTHORACIC & VASCULAR

- Pericardial coverage
- Sternal edge closure
- Convergent procedures
- Conduit harvest sites (saphenous and/or mammary)

### THORACIC

- Esophagectomy
- Lobectomy

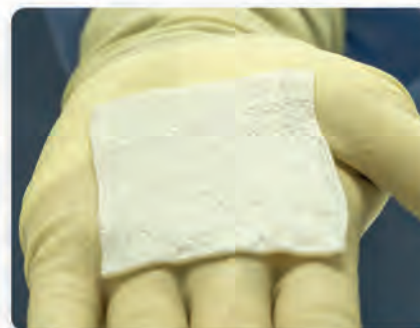
SKU	Product Name	Size
EAP-11	EVOPATCH AMNION GRAFT DOUBLE-LAYER	1x1cm
EAP-22	EVOPATCH AMNION GRAFT DOUBLE-LAYER	2x2cm
EAP-23	EVOPATCH AMNION GRAFT DOUBLE-LAYER	2x3cm
EAP-24	EVOPATCH AMNION GRAFT DOUBLE-LAYER	2x4cm
EAP-35	EVOPATCH AMNION GRAFT DOUBLE-LAYER	3x5cm
EAP-44	EVOPATCH AMNION GRAFT DOUBLE-LAYER	4x4cm
EAP-46	EVOPATCH AMNION GRAFT DOUBLE-LAYER	4x6cm
EAP-48	EVOPATCH AMNION GRAFT DOUBLE-LAYER	4x8cm
EAP-66	EVOPATCH AMNION GRAFT DOUBLE-LAYER, END TO END	6x6cm
EAP-67	EVOPATCH AMNION GRAFT DOUBLE-LAYER	6x7cm
EAP-1010	EVOPATCH AMNION GRAFT DOUBLE-LAYER	10X10cm
EAP-0612	EVOPATCH AMNION GRAFT DOUBLE-LAYER	6x12cm
EAP-0212	EVOPATCH AMNION GRAFT DOUBLE-LAYER	2x12cm

EvoPatch is a human cells, tissues or cellular or tissue-based product (HCT/P) regulated solely under Section 361 of the Public Health Service Act and 21 CFR Part 1271. This product is minimally manipulated and intended for homologous use, and does not require pre-market approval by the FDA. EvoPatch has not been cleared or approved by the FDA.

# evoderm™

## acellular dermal matrix (ADM)

**EvoDerm™** is an acellular dermal matrix derived from donated human dermis. It is processed to remove cellular components while preserving the extracellular matrix structure for surgical use where supplemental soft tissue support, protection, covering, or reinforcement is appropriate. Donated human tissue is recovered from qualified donors and screened and tested in accordance with applicable standards. The tissue is aseptically processed and terminally sterilized using low-temperature, low-dose gamma irradiation to a sterility assurance level (SAL) of  $10^{-6}$ .



### Key Product Characteristics

- **Acellular dermal scaffold**  
Processed to remove cellular components while preserving extracellular matrix architecture.
- **Structural support**  
Provides supplemental support and coverage for soft tissue applications consistent with lawful product use.
- **Flexible handling**  
Designed for surgical handling and placement.
- **Validated processing and sterility**  
Recovered, screened, tested, processed, and terminally sterilized in accordance with applicable standards.

### Potential Surgical Applications

For use in surgical settings where supplemental soft tissue support, protection, covering, or reinforcement is appropriate and consistent with lawful product labeling.

SKU	Product Name	Thickness
EVD483	EvoDerm, 4x8cm	Thick (3mm)
EVD-24-1	EvoDerm, 2x4cm	1mm
EVD-44-1	EvoDerm, 4x4cm	1mm
EVD-47-1	EvoDerm, 4x7cm	1mm
EVD-48-1	EvoDerm, 4x8cm	1mm
EVD-66-1	EvoDerm, 6x6cm	1mm
EVD-0816	EvoDerm Rectangle, 8x16cm	.8mm

EvoDerm is available in custom sizes on request

# evoflakes™

## placental tissue matrix

EvoFlakes™ is a dehydrated placental tissue matrix allograft supplied in a ready-to-use configuration. It is provided for homologous use only, consistent with the Instructions for Use and clinician judgment.

### Product Features

- Supplied for use in **surgical applications** and **wound management** settings, consistent with the Instructions for Use.
- May be used when the clinician determines additional **tissue coverage** is appropriate, based on patient presentation and procedure needs.
- May be placed over tissue structures within the treatment site, consistent with clinician technique and the Instructions for Use.
- **Does not require refrigeration.**
- Supplied in a configuration intended to support efficient **handling and placement.**

evoflakes™



### Specialties

- Obstetrics
- Gynecology
- Plastic Surgery
- Podiatry
- General Wound Care
- Surgical Wound Care

### Product Description

EvoFlakes™ is produced from placental tissue and contains **structural extracellular matrix proteins** native to the source tissue.

EvoFlakes™ may be selected for a range of patient presentations based on clinician assessment and site-specific considerations, consistent with the Instructions for Use.

EvoFlakes™ may be applied dry at the surgical and/or wound site and is provided in a format intended for **molding and contouring** to complex or irregular sites, consistent with clinician technique. EvoFlakes™ is supplied ready to use, may be stored at **ambient temperature**, and has a **three-year shelf life.**



evoflakes™

SKU	Product Name	Volume
EAF40	EVOFLAKES PLACENTAL TISSUE MATRIX SMALL	40mg
EAF80	EVOFLAKES PLACENTAL TISSUE MATRIX MEDIUM	80mg
EAF160	EVOFLAKES PLACENTAL TISSUE MATRIX LARGE	160mg
EAF250	EVOFLAKES PLACENTAL TISSUE MATRIX X-LARGE	250mg

# evograft™

## dbm putty

Evograft DBM Putty is a demineralized bone matrix (DBM) allograft formulated to resist irrigation and maintain surgical placement. It offers both osteoconductive properties and osteoinductive potential, serving as an effective scaffold for bone regeneration.

Available in multiple sizes to accommodate a wide range of indications—including foot and ankle, trauma and extremities, knees, hips, craniomaxillofacial, spine, and more—this putty is also ideal for augmenting autologous cancellous or corticocancellous grafts. Common specialties include craniofacial surgery, spinal fusion, hand and foot surgery, joint reconstruction, and fracture repair.

### Key Features & Benefits

- **Irrigation-resistant formulation:** Maintains placement even in wet surgical fields.
- **Ready-to-use, malleable putty:** Simply dispense and shape—no preparation required.
- **Osteoconductive and osteoinductive potential:** Promotes new bone growth through preserved growth factors.
- **Ambient temperature storage:** Convenient to store and handle in the OR.



### Indications & Specialties

- Foot and ankle procedures
- Trauma and extremities surgeries
- Knee and hip applications
- Craniomaxillofacial reconstructions
- Spinal fusion procedures
- Craniofacial surgery
- Hand and foot surgery
- Joint reconstruction
- Fracture repair
- Augmentation of autologous cancellous or corticocancellous bone grafts (enhancing graft volume and handling)

SKU	Product Name	Volume
EHG-01P	DBM PUTTY	1cc
EHG-02P	DBM PUTTY	2.5cc
EHG-05P	DBM PUTTY	5cc
EHG-10P	DBM PUTTY	10cc

# evograft™

## dbm crush

EvoGraft DBM Crush Mix combines 100% demineralized cortical bone matrix with mineralized cancellous chips—offering the dual benefits of biological activity and structural scaffolding. Formulated specifically to resist irrigation, this ready-to-use composite maintains placement in the surgical site, even in fluid-rich environments. Each lot undergoes rigorous testing to verify osteoinductive potential, optimizing reliability in clinical use.



### Key Features & Benefits:

- **Easy-to-use:** Open, apply, and go—no preparation or mixing required.
- **Irrigation-resistant:** Designed to remain intact and effective under irrigation.
- **Proven bioactivity:** Offers osteoconductive structure and osteoinductive potential from fresh DBM components.
- **Ambient temperature storage:** Convenient in OR settings.
- **Augments autografts:** Enhances handling and volume when used with cancellous or corticocancellous grafts.

### Indications & Specialties

- Craniofacial reconstruction
- Spinal fusion procedures
- Hand and foot surgery
- Joint reconstruction
- Fracture repair
- Augmentation of autologous cancellous or corticocancellous bone grafts

SKU	Product Name	Volume
EHG-01C	DBM CRUSH MIX	1cc
EHG-02C	DBM CRUSH MIX	2.5cc
EHG-05C	DBM CRUSH MIX	5cc
EHG-10C	DBM CRUSH MIX	10cc

# evograft™

## dbm strip

Evograft DBM (Demineralized Bone Matrix) Sponge Strip is crafted from a single piece of human cancellous bone, fully demineralized to reveal native growth factors critical for stimulating new bone formation. Its sponge-like architecture allows seamless adaptation: when compressed, the strip expands to its original form—effectively filling voids and minimizing gaps between the graft and host bone. It is designed to resist irrigation, ensuring surgical placement remains secure even in fluid-rich environments. This versatile graft serves to augment autologous cancellous or corticocancellous grafts and is suited for craniofacial surgery, spinal fusion, hand and foot procedures, joint reconstruction, and fracture repair.



### Key Features & Benefits

- Sponge-like consistency & expansion
- Osteoconductive & osteoinductive
- Resists irrigation & stays in place
- User-friendly & ready-to-use

### Indications & Specialties

- Ideal for a broad spectrum of surgical applications:
- Craniofacial reconstruction
- Spinal fusion (cervical and lumbar)
- Hand and foot surgery
- Joint reconstruction
- Fracture repair
- Bone graft augmentation alongside autologous cancellous or corticocancellous grafts

SKU	Product Name	Size
EVS26197	DBM STRIP	26 x19x7mm
EVS50105	DBM STRIP	50x10x5mm
EVS50205	DBM STRIP	50x20x5mm
EVS50207	DBM STRIP	50x20x7mm

# evograft™

## dbm cubes

- **EvoGraft DBM Cubes** are 100% demineralized bone matrix human allografts, produced through a proprietary process that preserves the bone's natural growth factors. These cubes are compressible and elastic, exhibiting a cancellous-like, open-porous architecture that enhances integration and handling in the surgical field.



- **Key Features & Benefits**

- **Easy-to-use, ready-to-implant cubes:** save time and simplify OR prep.
- **Rapid expansion and compression:** cubes compress during delivery and re-expand to conform to defect contours, minimizing dead space and maximizing contact with host bone.
- **Irrigation-resistant and stays in place:** maintains position in fluid-rich environments, unlike loose particulates.
- **Osteoconductive and osteoinductive:** preserves key growth factors to guide new bone formation and provides scaffold support for cellular in-growth.

### Indications & Specialties

Ideal for use in:

- Craniofacial bone reconstruction
- Spinal fusion procedures
- Hand and foot surgeries
- Joint reconstruction
- Fracture repair
- Graft augmentation: can be combined with autologous cancellous or corticocancellous grafts to enhance handling and fill volume

SKU	Product Name	Size
EV73010	DBM CUBES	10x10x10mm
EV73012	DBM CUBES	12x12x12mm
EV73014	DBM CUBES	14x14x14mm

# evograft™

## dbm fibers

EvoGraft DBM Fibers are composed of 100% human, demineralized cortical bone fibers that deliver a highly connected, fibrillar scaffold capable of compressing to fill bone voids effectively. This unique architecture retains essential growth factors—such as BMPs—and supports osteoconductive and osteoinductive bone formation. These loose, pliable fibers come in multiple volume options and rehydrate within minutes for optimal usability.



### Key Features & Benefits

- 100% human demineralized cortical bone
- Osteoconductive scaffold
- Osteoinductive potential
- Rapid rehydration
- Pliable and compressible
- Excellent scaffold for bone marrow aspirate (BMA)
- Sterile & stable

### Indications & Specialties

EvoGraft DBM Fibers are well-suited for:

- Acting as a **bone graft extender** in spinal fusion or large defect repairs.
- **Filling irregular bony voids** in spinal, craniofacial, trauma, and orthopedic cases.
- Enhancing **autograft volume and handling**, especially in challenging reconstructive situations.
- Providing a **scaffold for BMA** in complex healing environments.
- Use across specialties in **Spine, Orthopedics, Trauma, Craniofacial, Hand & Foot, and General Surgery.**

SKU	Product Name	Size
EVF001	DBM CORTICAL FIBERS (FILLERS)	1cc
EVF020	DBM CORTICAL FIBERS (FILLERS)	2cc
EVF025	DBM CORTICAL FIBERS (FILLERS)	2.5cc
EVF050	DBM CORTICAL FIBERS (FILLERS)	5cc
EVF010	DBM CORTICAL FIBERS (FILLERS)	10cc

# evograft™

## dbm fiber boats

EvoGraft DBM Fiber Boats are meticulously crafted from demineralized human cortical bone fibers, entangled and shaped into boat-like forms tailored to complement specific surgical applications. These engineered grafts preserve essential growth factors—such as BMPs—within a highly interconnected, biologically active matrix. Designed to be hydratable, pliable, and shape-conforming, they rehydrate in minutes and retain integrity during implantation. Sterilization is achieved via e-beam to a sterility assurance level of  $10^{-6}$ , ensuring maximum safety without compromising performance.



### • Key Features & Benefits

- 100% human demineralized cortical bone fibers
- Osteoconductive scaffold & osteoinductive potential
- Rapid rehydration and flexible handling
- Resists irrigation—remains in place during surgery
- Sterility Assurance Level of  $10^{-6}$  via e-beam sterilization

### Indications & Specialties

Ideal for use in:

- Posterolateral and posterior cervical spinal fusion procedures.
- Filling non-structural bone voids across spine, trauma, pelvis and extremities.
- Environments requiring secure placement in irrigation-heavy surgical fields.
- Applications benefiting from combined scaffold and osteoinductive activity (e.g., augmenting autografts or graft extenders).

SKU	Product Name	Size
EVB50205	DBM FIBER BOAT SML	50x25x5mm
EVB100205	DBM FIBER BOAT LRG	100x25x5mm

# evograft™

## dbm osteoblend™

EvoGraft OsteoBlend is a sophisticated bone graft product composed of 70% cortical fibers and 30% cortical granules, crafted from 100% demineralized cortical bone. Designed to provide both structural scaffolding and biologically active stimulation, this blend combines superior handling characteristics with potent regenerative potential. Its formulation rehydrates quickly (within minutes) and is sterilized with low-dose gamma irradiation achieving a Sterility Assurance Level (SAL) of  $10^{-6}$  ensuring both clinical ease and safety. Available in multiple volumes, OsteoBlend meets the precise needs of high-demand surgical environments.



### Key Features & Benefits

- Balanced Composition (70/30)
- Osteoconductive Scaffold + Osteoinductive Potential
- Rapid Rehydration, Surgeon-Friendly Handling
- High Sterility Assurance



### Indications & Clinical Applications

Ideal for a wide range of bone repair needs, including:

- Spinal fusion (cervical, lumbar, complex deformity cases).
- Trauma and nonunion repair in long bones.
- Craniofacial reconstruction and alveolar ridge augmentation.
- Hand and foot surgical applications.
- Joint reconstruction procedures.
- Augmentation of autologous cancellous or corticocancellous grafts.

SKU	Product Name	Size
EV70305	OSTEOBLEND 70/30	5cc
EV70310	OSTEOBLEND 70/30	10cc
EV70315	OSTEOBLEND 70/30	15cc
EV70360	OSTEOBLEND 70/30	60cc

# evograft™

## tendons

EvoGraft Allograft Tendons are high-strength, biologically supported tendon grafts processed via PASCO<sub>2</sub>®—a proprietary supercritical carbon dioxide sterilization method. This advanced technique removes unwanted impurities while preserving critical tensile strength and elastic properties, resulting in grafts that outperform traditional gamma-irradiated alternatives in durability and resilience



These tendons are available in both PASCO<sub>2</sub> non-irradiated and E-beam irradiated formats, offering surgeons flexibility based on clinical preferences.

### Key Features & Benefits:

- Superior Tensile Integrity & Elasticity
- Dual Processing Format
- Ready to Use with Consistency
- Wide Anatomical Coverage

SKU	Product Name	Sterilization
EV801FF	TIBIALIS ANTERIOR TENDON	E BEAM
EV841FF	TIBIALIS POSTERIOR TENDON	E BEAM
EV189FF	ACHILLES STRIP	E BEAM
EV290FF	ACHILLES TENDON WITH BONE BLOCK	E BEAM
EV292FF	BTB TENDON, HEMI	E BEAM
EV393FF	GRACILIS	E BEAM
EV392FF	SEMITENDINOSUS TENDON	E BEAM
EV293FF	PRE-SHAPED BTB TENDON	E BEAM
EV294FF	PERONEUS LONGUS	E BEAM
EVP801FF	TIBIALIS ANTERIOR TENDON	NON IRRADIATED
EVP841FF	TIBIALIS POSTERIOR TENDON	NON IRRADIATED
EVP189FF	ACHILLES STRIP	NON IRRADIATED
EVP290FF	ACHILLES TENDON WITH BONE BLOCK	NON IRRADIATED
EVP393FF	GRACILIS	NON IRRADIATED
EVP292FF	BTB TENDON, HEMI	NON IRRADIATED
EVP394FF	SEMITENDINOSUS TENDON	NON IRRADIATED
EVP293FF	PRE-SHAPED BTB TENDON	NON IRRADIATED
EVP294FF	PERONEUS LONGUS	NON IRRADIATED

# evograft™

## fascia lata

Evograft Fascia Lata is a soft tissue allograft derived from the lateral surface of the thigh. It's commonly used in a wide range of surgical reconstructions, including ligament repairs, dural and craniotomy defect repairs, eyelid reconstruction, and bladder suspension.



### Key Features & Benefits

- **Versatile and durable:** Ideal for reconstructing both cranial and pelvic soft tissue structures.
- **Ready for clinical use:** Preprocessed for ambient storage and swift intraoperative handling.
- **Osteoconductive scaffold properties:** Provides structural support and integrates well with host tissue.
- **Biological alternative to synthetic mesh or autografts:** Eliminates donor-site morbidity while offering natural tissue behavior.

### Indications & Specialties

- Ligament reconstruction (e.g., ACL, facial paralysis support)
- Craniotomy/wound closure and dural defect repair
- Eyelid repair (e.g., ptosis procedures)
- Bladder neck suspension or support in urology/gynecology

SKU	Product Name	Size
EV823FD	FASCIA LATA	1-49 sqcm
EV824FD	FASCIA LATA	50-100 sqcm
EV825FD	FASCIA LATA	101-150 sqcm
EV826FD	FASCIA LATA	151> sqcm
EV823FF	FASCIA LATA - FROZEN	1-49 sqcm
EV824FF	FASCIA LATA - FROZEN	50-100 sqcm
EV825FF	FASCIA LATA - FROZEN	101-150 sqcm
EV826FF	FASCIA LATA - FROZEN	151> sqcm
EV820FD	FASCIA LATA PATCH	15x20mm
EV821FD	FASCIA LATA PATCH	20x30mm
EV822FD	FASCIA LATA PATCH	30x40cm

# evograft™

## pericardium

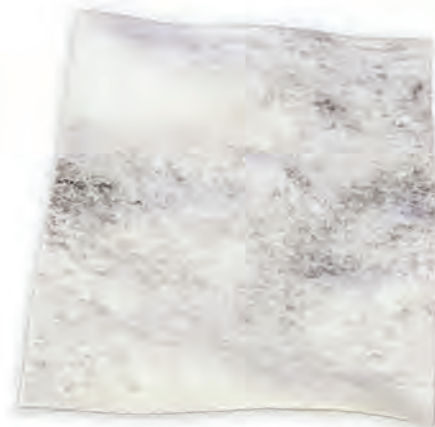
Evograft Pericardium provides a versatile and reliable soft tissue solution for surgeons. Sourced from the pericardial sac, it combines mechanical strength, pliability, and biological compatibility—making it suitable for delicate reconstructions across multiple surgical domains. Unlike synthetic patches, it offers a naturally collagen-rich scaffold that supports tissue ingrowth, reduces inflammation, and integrates seamlessly with adjacent tissues.

In neurosurgical applications, pericardial patches are a trusted alternative to primary dural repair when the native dura is compromised. Their ability to provide a watertight seal, suturability, and biocompatibility significantly minimizes the risk of cerebrospinal fluid (CSF) leaks, pseudomeningocele formation, and infection—critical postoperative concerns.

Similarly, in periodontal procedures, pericardial membranes serve effectively as guided tissue regeneration (GTR) barriers, preventing soft tissue invasion while facilitating bone and connective tissue growth.

### Key Features & Benefits

- **Thin yet robust structure:** Ideal for patching delicate or sensitive soft tissue sites.
- **Biocompatible and safe:** Designed for seamless integration with host tissue.
- **Convenient handling:** Available in ready-to-use form, requiring minimal preparation.



### Indications & Specialties

- Pericardial defect repair (e.g., post-cardiac surgery)
- Dural/dura mater repair in neurosurgical procedures
- Periodontal and oral soft tissue reconstruction

SKU	Product Name	Size
EV827FD	PERICARDIUM	15x20cm
EV828FD	PERICARDIUM	20x30cm
EV829FD	PERICARDIUM	30x40cm

# evograft™

## allografts

EvoGraft Bone Allografts are premium human-derived cortical bone grafts available in multiple structural formats—including femoral strut, humeral strut, fibular shaft, femoral head, and tricortical wedges in various sizes. Engineered for precision, these grafts are crafted to deliver structural support and biological integration across a wide array of orthopedic and reconstructive procedures.

### Product Formats & Advantages

The EvoGraft range includes:

- **Femoral Strut Grafts** (whole and split formats) — ideal for bridging structural defects and repair of long-bone diaphyseal gaps.
- **Humeral Strut Graft** — tailored for upper extremity reconstructions requiring cortical reinforcement.
- **Fibular Shaft** in 50mm or 100mm+ options — versatile in length and shape for segmental defect repair.
- **Femoral Head Allograft** — suited for acetabular or periacetabular reconstruction.



SKU	Product Name
EV444FD	EVOGRAFT FEMORAL STRUT GRAFT
EV446FD	EVOGRAFT FEMORAL STRUT GRAFT, SPLIT, 1 PACK
EV445FD	EVOGRAFT FEMORAL STRUT GRAFT, SPLIT, 2 PACK
EV556FD	EVOGRAFT HUMERAL STRUT GRAFT
EV428FD	EVOGRAFT FIBULA SHAFT 50mm
EV429FD	EVOGRAFT FIBULA SHAFT 100mm+
EV447FD	FEMORAL HEAD
EV444FF	EVOGRAFT FEMORAL STRUT GRAFT, FROZEN
EV446FF	EVOGRAFT FEMORAL STRUT GRAFT, SPLIT, 1 PACK, FROZEN
EV445FF	EVOGRAFT FEMORAL STRUT GRAFT, SPLIT, 2 PACK, FROZEN
EV556FF	EVOGRAFT HUMERAL STRUT GRAFT, FROZEN
EV428FF	EVOGRAFT FIBULA SHAFT 50mm, FROZEN
EV429FF	EVOGRAFT FIBULA SHAFT 100mm+, FROZEN
EV447FF	FEMORAL HEAD, FROZEN

# evograft™

## tricortical wedge

Evograft Tricortical Wedges are pre-cut, freeze-dried human allograft wedges—engineered to restore spinal height and structural alignment. These wedges are used following disc removal (due to disease, aging, or herniation) or to correct deformities in the cervical and lumbar spine. Available in a range of sizes—from 8mm to over 40mm—they provide tailored solutions for varying surgical needs.

### Indications & Specialties

#### Spinal Procedures:

- Cervical spine—e.g., anterior cervical discectomy and fusion (ACDF)
- Lumbar spine—e.g., disc height restoration, deformity correction

#### Supporting Applications:

- Used where structural support, immediate stability, and precise distraction are required post-disc removal or during deformity alignment



### Key Features & Benefits

- **Size Versatility:** Available in five discrete size ranges—8–15 mm, 16–19 mm, 20–29 mm, 30–39 mm, and  $\geq$  40 mm—providing reliable options for surgeons across varied anatomies.
- **Freeze-Dried Allograft:** Offers long-term ambient storage without compromising mechanical integrity—a key advantage for OR logistics and shelf stability.
- **Osteoconductive Structure:** Composed of human cortical bone, it acts as a scaffold for new bone in-growth and eventual integration into host tissue.
- **Structural Durability:** Retains strength typical of rigid cortical bone, enabling early mechanical support.
- **Ease of Use:** Cartilage-like modeling and preformed shape facilitate consistent placement, minimizing intraoperative shaping.

SKU	Product Name	Size Range
EV305FD	EVOGRAFT Tricortical Wedge	8 – 15 mm
EV302FD	EVOGRAFT Tricortical Wedge	16 – 19 mm
EV308FD	EVOGRAFT Tricortical Wedge	20 – 29 mm
EV309FD	EVOGRAFT Tricortical Wedge	30 – 39 mm
EV280FD	EVOGRAFT Tricortical Wedge	$\geq$ 40 mm

# evograft™

## allograft

### EVOGRAFT CORTICAL ACF (ANTERIOR CERVICAL FUSION SPACER)

Evograft Cortical ACF is a 100% human cortical bone spacer precision-engineered for anterior cervical fusion. Meticulously computer-designed for consistency and compatibility with universal inserters, this graft features a V-Groove surface serration that enhances traction during implantation. Maintained through lyophilized preservation, it retains critical bone integrity. The tissue undergoes PASCO<sub>2</sub>® washing and is sterilized via e-beam, ensuring safety without sacrificing biomechanical properties.

#### Key Features & Benefits

- **Precision-engineered design:** Ensures consistent fit and compatibility with standard inserters.
- **V-Groove serrated surface:** Enhances interbody traction and stability during placement.
- **Lyophilized allograft:** Long-term shelf life and maintained biomechanical integrity.
- **PASCO<sub>2</sub>® washed + e-beam sterilized:** High-level sterility with preserved structural strength.
- **Ready-to-use at room temperature:** Simplifies logistics in the operating room.

SKU	Product Name	Height
EV-775FD	EVOGRAFT 11 x 14 5 DEGREE CORTICAL ACF	5mm
EV-776FD	EVOGRAFT 11 x 14 5 DEGREE CORTICAL ACF	6mm
EV-777FD	EVOGRAFT 11 x 14 5 DEGREE CORTICAL ACF	7mm
EV-778FD	EVOGRAFT 11 x 14 5 DEGREE CORTICAL ACF	8mm
EV-779FD	EVOGRAFT 11 x 14 5 DEGREE CORTICAL ACF	9mm

### EVOGRAFT COTTON AND EVANS WEDGES

Evograft Cotton and Evans Wedges are pre-shaped cortical allograft wedges designed for foot/ankle osteotomies. Available in multiple heights they eliminate the need for intraoperative shaping.

#### Key Features & Benefits

- **Pre-shaped design:** Reduces OR time by eliminating carving or shaping.
- **Room-temperature storage:** Streamlines handling and logistics.
- **Freeze-dried preservation:** Maintains structural integrity and shelf stability.

SKU	Product Name	Height
ECW105	COTTON WEDGE	5mm
ECW106	COTTON WEDGE	6mm
ECW107	COTTON WEDGE	7mm
ECW108	COTTON WEDGE	8mm
EEW106	EVANS WEDGE	6mm
EEW108	EVANS WEDGE	8mm
EEW110	EVANS WEDGE	10mm
EEW112	EVANS WEDGE	12mm



#### Indications & Specialties

Widely used in:

- Cervical spine surgery (e.g., anterior cervical discectomy and fusion)
- Structural intervertebral support where precise insertion and stability are paramount



#### Indications & Specialties

Widely used in:

- Foot and ankle corrective osteotomies, such as Cotton osteotomies
- Evans osteotomies and other hindfoot realignments



### Indications & Specialties

- Craniofacial surgery
- Spinal fusion (instrumented or posterolateral/interbody)
- Hand & foot surgery (e.g., arthrodesis, small bone defects)
- Joint reconstruction (e.g., trauma cases around shoulder, hip, or knee)
- Fracture repair (fills metaphyseal or cancellous voids)

*Also suitable for augmenting autologous cancellous or corticocancellous grafts*

### EVOGRAFT CANCELLOUS CUBES

Evograft Cancellous Cubes are pre-formed allograft bone cubes engineered to fill bony voids or gaps, providing an osteoconductive scaffold that supports bone ingrowth using the patient's own bone. They are a ready-to-use alternative to autograft, with broad application across craniofacial, spinal, hand, foot, joint reconstruction, and fracture repair surgeries.

### EVOGRAFT CANCELLOUS CHIPS

Evograft Cancellous Crushed Chips are small bone particles designed to fill irregular voids and gaps. They offer a ready-to-use alternative to autograft and can be used alone or to support autologous grafts, across craniofacial, spinal, hand, foot, joint reconstruction, and fracture repair procedures.

### Key Features & Benefits

- **Easy-to-use & quick prep:** Implant-ready without the need for hydration or thawing.
- **Room-temperature storage:** Convenient handling in OR.
- **Osteoconductive scaffold:** Supports cell migration and vascular ingrowth.
- **Resists irrigation; stays in place:** Ensures stability during surgical irrigation.

SKU	Product Name	Size	Volume
EV12010	CANCELLOUS CUBES	3-7mm	7.5cc
EV12015	CANCELLOUS CUBES	3-7mm	15cc
EV12030	CANCELLOUS CUBES	3-7mm	30cc
EV10005	CANCELLOUS CRUSHED	1-4mm	5cc
EV10010	CANCELLOUS CRUSHED	1-4mm	10cc
EV10015	CANCELLOUS CRUSHED	1-4mm	15cc
EV10030	CANCELLOUS CRUSHED	1-4mm	30cc
EV11010	CANCELLOUS CRUSHED	4-10mm	10cc
EV11015	CANCELLOUS CRUSHED	4-10mm	15cc
EV11030	CANCELLOUS CRUSHED	4-10mm	30cc

# synthetic bone graft

## BI-OSTETIC GRANULES IN COLLAGEN MATRIX (HA-TCP)

Evologics Bi-Ostetic Granules are synthetic, porous bone substitute granules composed of Tricalcium Phosphate (TCP) and Hydroxyapatite (HA). Engineered to mimic cancellous bone and optimize osteoconduction, they are designed for slow and controlled resorption with progressive bone ingrowth.

### Key Features & Benefits

- **Porous, spongy scaffold:** Mimics cancellous bone structure to facilitate vascularization and bone cell migration.
- **Balanced resorption:** TCP component enables moderate resorbability; HA provides long-term scaffold stability. Ideal for complete bone remodeling over time.
- **High osteoconductivity:** Acts as an effective scaffold for natural bone in-growth.
- **Biocompatible & safe:** Ceramic-based with minimal inflammatory response.
- **Versatile application:** Granular form is easy to pack into irregular voids; may be mixed with autogenous bone marrow if needed.
- **Clinical predictability:** Following standard of synthetic HA/TCP products, predictable remodeling timeline without unpredictable degradation.



### Indications & Specialties

Widely used in:

- **Spinal fusion**  
(posterolateral or interbody)
- **Trauma surgery**  
(fracture repair of extremities)
- **Orthopedic reconstructions**  
(hand, foot, long bones, pelvic fixation)
- **Hip revision and joint reconstruction procedures**
- Procedures requiring spinal, pelvic, or extremity bone void filling

SKU	Product Name	Volume
EBF1-50X10-01	SYNTHETIC GRANULES IN COLLAGEN MATRIX STRIP	1cc
EBF2-50X10-02	SYNTHETIC GRANULES IN COLLAGEN MATRIX STRIP	2cc
EBF2-50X10-05	SYNTHETIC GRANULES IN COLLAGEN MATRIX STRIP	5cc
EBF1-100x25-10	SYNTHETIC GRANULES IN COLLAGEN MATRIX STRIP	10cc
EBF1-100x25-15	SYNTHETIC GRANULES IN COLLAGEN MATRIX STRIP	15cc

# prp & bmac

## BMAC KIT



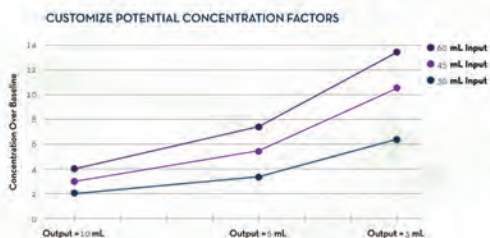
Evologics BMAC Kit provides the surgeon everything needed to aspirate, concentrate and deliver a mixture of whole blood and bone marrow. Bone marrow is rich in platelets, nucleated and progenitor cells. BMAC collects the patient's bone marrow and concentrates stem cells within the bone marrow, allowing the healthcare professional to return the concentrated stem cells to the patient. This process can provide autologous healing properties to the body. The revolutionary Lightning Needle allows for quicker and easier bone marrow aspiration.



### Benefits

- Autologous
- Easy-to-use
- Consistent, reproducible, reliable results
- Up to three spins per disposables per patient
- Fully closed system
- Completely automated
- Lightning Needle allows for quicker and easier bone marrow aspiration
- Available with or without Lightning Needle

### Customize Potential Concentration Factors<sup>1</sup>



**HIGH INPUT VOLUMES = LOW OUTPUT VOLUMES = HIGHEST CONCENTRATION!**  
Users can process 30-60 mL per cycle (up to 180 mL per patient) and select final output volume between 3-10 mL per cycle (up to 30 mL per patient) to customize final concentration.

## PRP KIT

PRP or Platelet Rich Plasma, is prepared by using blood centrifugation, obtaining a high concentration of platelet plasma. Human platelets can provide cohesion function for bleeding, as well as provide essential growth factors to facilitate healing.

### SKU

EVBMA01

EVBMA02

EVS310

### Product Name

BONE MARROW CONCENTRATION KIT

BONE MARROW CONCENTRATION KIT, WITH LIGHTNING NEEDLE

PRP KIT



**evologics**  
evolving biologics

## The Evologics Difference

Headquartered in San Antonio, Texas, Evologics America was founded in 2009 with the goal of providing the highest-quality biologics products, emphasizing safety, integrity and service.

At Evologics, our mission is to make lives better by providing solutions that allow people to live and save lives, and to above all, combine innovation with compassion – never losing sight that every individual deserves to live the best life they can. We aim to make these solutions standard of care, allowing more and more individuals to live life better – that’s the Evologics difference. We care more.

## Our Commitment to Research & Development

Evologics is committed to proving clinical evidence of our products in the surgical space. That’s why we are currently investing in several different clinical studies exploring and confirming the efficacy of our products to gain standard of care designation. It’s the Evologics difference. We care more.

## contact us



4766 Research Drive  
San Antonio, TX 78240



866-982-1511



866-982-1533



[info@evologicsamerica.com](mailto:info@evologicsamerica.com)



[evologicsamerica.com](http://evologicsamerica.com)

